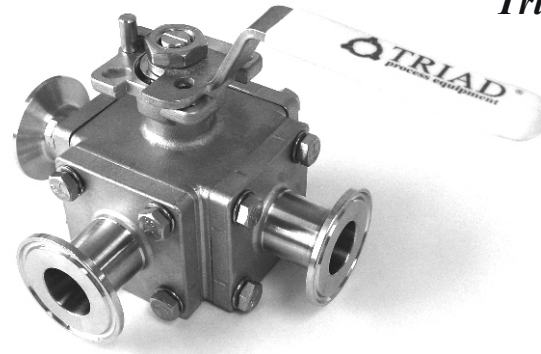




Triad Three-Way Sanitary T-Clamp Ball Valve L or T Option, PTFE Cavity Filled, Series 30L or 30T - 92061, direct mount actuator mounting pad and stem.

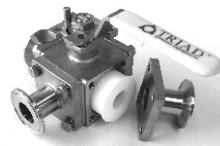
Triad Series 30L-92061 & 30T-92061



MATERIALS LIST

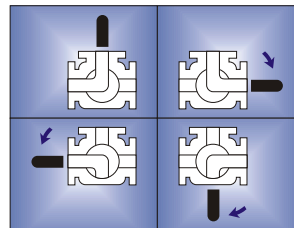
NO.	PART NAME	MATERIAL	Q'TY
1	Body	ASTM A351 Gr. CF8M	1
2	T-Clamp Cap	ASTM A351 Gr. CF8M	3
3	Ball	SUS 316	1
4	Stem	SUS 316	1
5	Thrust Washer	PTFE	1
6	Stud	SUS 304	16
7	Handle	SUS 304	1
8	Cavity Filler	PTFE	4
9	Gland	SUS 304	1
10	V-Ring Packing	PTFE	1
11	Belleville Washer	SUS 301	2
12	Cover Cap	ASTM A351 Gr. CF8M	1
13	Cover Joint Gasket	PTFE	4
14	Stem Nut	SUS 304	2
15	Washer	SUS 304	16
16	Nut	SUS304	16
17	Handle Sleeve	Vinyl	1

Cavity Filler Detail

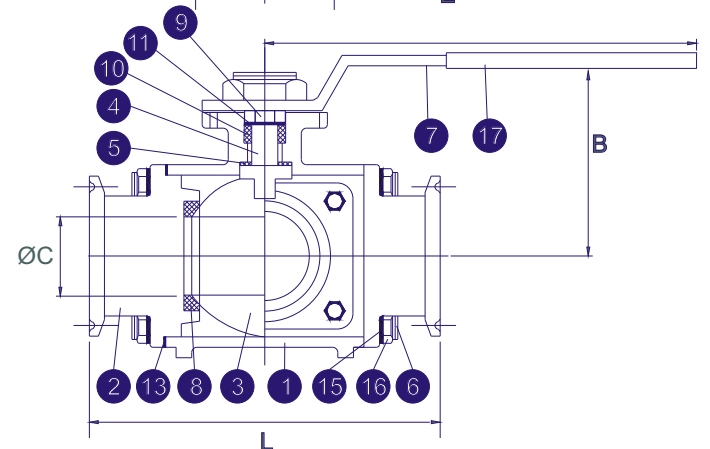
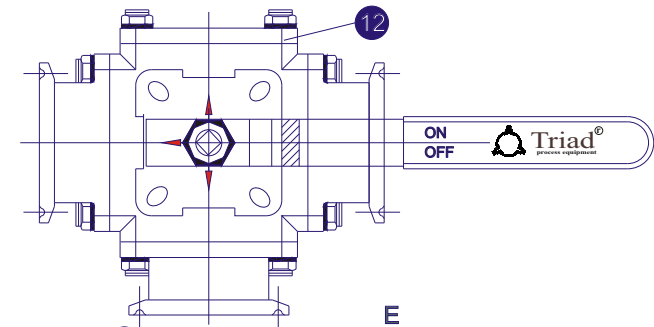
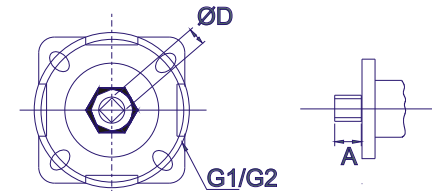
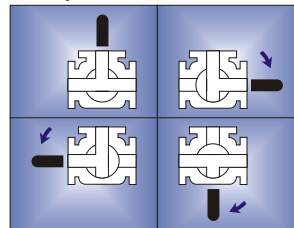


FLOW PATTERNS

3-Way L-Port 30L



3-Way T-Port 30T



DIMENSIONS (in.)

SIZE	A	B	øC	øD	E	L	G1/G2	ISO5211
1/2"	.35	3.07	.37	.35	4.75	4.64	1.42/1.65	F03/04
3/4"	.35	3.23	.63	.35	4.75	5.00	1.42/1.65	F03/04
1"	.43	3.54	.87	.43	5.40	6.00	1.65/1.97	F04/05
1 1/2"	.55	4.33	1.38	.55	7.20	6.89	1.97/2.76	F05/07
2"	.55	4.53	1.87	.55	7.20	7.48	1.97/2.76	F05/07
2 1/2"	.66	5.04	2.37	.66	14.50	8.98	2.76/4.02	F07/10
3"	.90	5.27	2.87	.87	15.76	10.24	2.76/4.02	F10/F12
4"	.90	5.04	3.83	.87	15.76	12.50	4.02/4.92	F10/F12