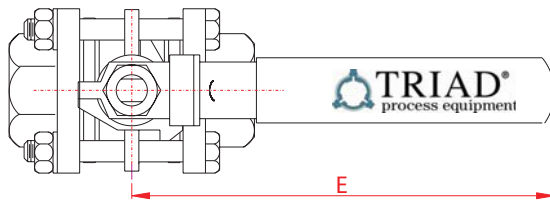


Series 50 1000PSI STAINLESS STEEL BALL VALVES

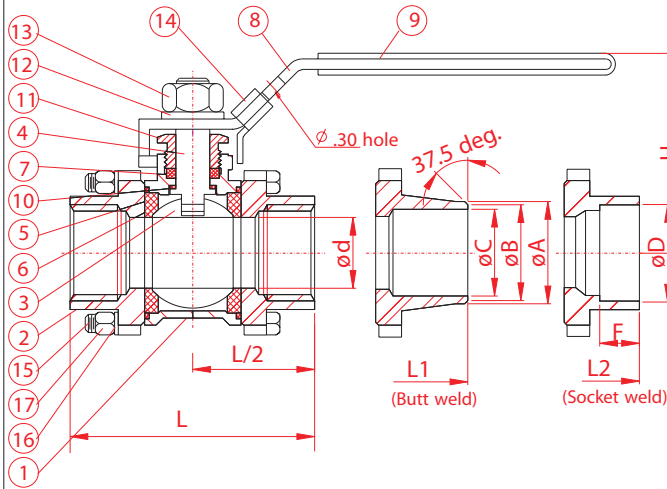


- * For general chemical service applications
- * Adjustable stem packing
- * Blow-out proof stem design
- * Body and end caps quality investment casting
- * In-line repairable
- * Available in carbon or stainless steel body construction
- * 100% tested air under water, at 100psi, Open and closed positions
- * Locking handle
- * Assembled dry without silicone



SPECIFICATIONS

- * Working pressure: 1000psi WOG
- * Temperature Range: -60 to 450F
- * End Type: Threaded, Socket, & Butt Weld



DIMENSIONS (in.)

SIZE	d	L	L1	L2	H	E	A	B	C	D	F	Cv FACTOR	W Lb
1/4"	.45	2.38	2.24	2.24	2.04	4.00	.90	.84	.39	.55	.41	6.0	.77
3/8"	.50	2.38	2.25	2.24	2.04	4.00	.90	.84	.51	.68	.41	12.0	.95
1/2"	.60	2.58	2.54	2.54	2.28	4.00	1.10	1.02	.51	.86	.43	19.0	1.14
3/4"	.78	3.11	3.15	3.15	2.28	5.38	1.39	1.30	.82	1.08	.53	37.0	1.58
1"	.98	3.38	3.11	3.38	2.75	5.35	1.69	1.57	1.04	1.35	.53	64.0	2.20
1-1/4"	1.26	4.13	4.13	4.13	2.95	5.38	2.06	1.93	1.37	1.70	.55	103	3.75
1-1/2"	1.49	4.68	4.72	4.72	3.38	6.46	2.32	2.16	1.59	1.93	.59	143	5.28
2"	1.97	5.25	5.27	5.27	3.86	6.46	2.83	2.65	2.06	2.41	.68	360	7.80
2-1/2"	2.56	6.42	6.42	6.42	5.12	9.77	3.62	3.38	2.56	3.03	.72	440	16.5
3"	3.15	7.21	7.24	7.24	5.43	9.77	4.21	3.94	3.15	3.54	.78	520	23.0
4"	3.94	8.98	8.98	8.98	7.09	11.42	5.35	5.02	3.97	4.53	.98	820	42.9

MATERIALS LIST

NO	PART NAME	SPECIFICATION
1	BODY	ASTM A351 GR.CF8M
2	END CAP	ASTM A351 GR.CF8M
3	BALL	ASTM A351 GR.CF8M
4	STEM	S.S.316
5	BALL SEATS	PTFE
6	END SEAL	PTFE
7	STEM PACKINGS	PTFE
8	HANDLE	S.S.304
9	HANDLE SLEEVE	VINYL GRIP
10	THRUST WASHER	PTFE
11	GLAND	S.S.304
12	HANDLE WASHER	S.S.304
13	HANDLE NUT	S.S.304
14	LOCKING PLATE	S.S.304
15	BOLTS	S.S.304
16	BOLT WASHERS	S.S.304
17	BOLT NUTS	S.S.304

